



## Visqueen Vapour Control Tapes

Supports the installation of Visqueen Vapour Check membrane

- Utilises Visqueen's advanced adhesive technology
- Outstanding working temperature range -40oC to 40oC
- Exceptional adhesion to wood and metal
- Displaces moisture ensuring good bond to surface
- 20 X more aggressive than standard adhesive systems at low temperatures

### The complete system:

- Ensures airtightness and compliance to Part L Building Regulations
- Protects insulation from condensation damage.
- Conforms to VCL CE Mark EN13984:2013

### Description

Visqueen New high performance range of vapour control tapes, when installed correctly with Visqueen Check membrane (also known as Vapour Control Layers, VCLs), restricts vapour permeation and increases the thermal efficiency of buildings. Visqueen's Vapour Control system is part of a "Build tight- Ventilate right" strategy and protects insulation from condensation damage.

### The high performance system consists of:

- Visqueen Double Sided Vapour Tape - 20mm x 50m for mounting vapour barriers on metal or timber substructures
- Visqueen Single Sided Vapour Tape - 50mm x 15m for jointing vapour barriers. Also detailing round penetrations

### VCL membranes

The tape range should be used with the following Visqueen Vapour Control Layers:

- [Visqueen Vapour Check](#) 125 micron thick, 4m x 50m or 2.45m x 50m



---

**Applications**

Visqueen Vapour Control tape range supports the installation of Visqueen Vapour barriers in the following applications:

- On the inside of buildings for walls, floors, ceilings and roof structures
- Timber and metal frames
- Solid concrete floor and wall structures

---

**Did you know**

**Visqueen Vapour Control system ensures airtightness without damaging the membranes using nails or staples. This also contributes to greater thermal efficiencies.**

**Damp Proof Membranes (DPM) or Temporary Protective Sheeting (TPS) are NOT suitable as vapour control layers as VCLs must be tested and comply with the requirements CE Mark EN 13984:2013**

---

**Specific Approvals / Standards**

- CE Mark to EN13984:2013 – Plastic Vapour Control Layers
- Part L Building Regulations
- BS5250:2011 Code of practice for control of condensation in buildings

---

**The Innovative Visqueen Advanced Adhesive Technology**

- A high performance adhesive
- Exceptional adhesion to various surfaces
- Extreme application temperature range (-40oC to 40oC)
- Displaces moisture ensuring good bond to surface
- Suitable for indoor and outdoor use

---

**Installation**

---

**Mounting vapour control layer on pre-wall structures:**

- Apply Visqueen Double Sided Vapour Tape to the timber (or metal) studs, head and sole plate.
- Once applied use a hard rubber seam roller over the tape to ensure a good bond.
- Carefully peel off release liner.
- Apply the Visqueen Vapour Control Layer membrane to the frame and use a hard rubber seam roller to press on each strut to ensure a good bond.
- For jointing, overlap the VCL membrane by approx. 100mm and seal overlap with Visqueen Single Sided Vapour Tape.

## INSTALLATION GUIDE



1. Apply Visqueen Double Sided Vapour Tape to the timber (or metal) studs, head and sole plate.



2. Carefully peel off release liner of the Visqueen Double Sided Vapour Tape.



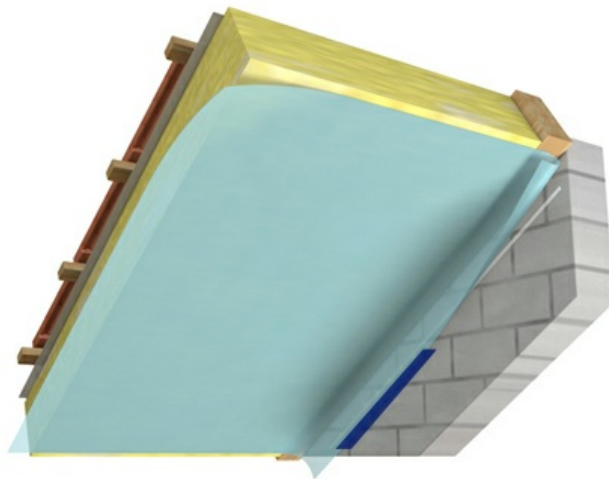
3. Apply the Visqueen Vapour Control Layer membrane to the frame and use a seam roller to press on each strut to ensure a good bond.



4. For jointing, overlap the VCL membrane by approx. 10cm and seal overlap with Visqueen Single sided Vapour Tape.

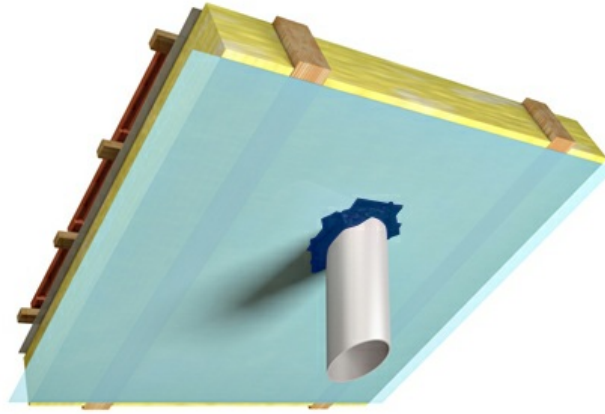
### Perimeter flashing – jointing the VCL to the solid wall

Before applying, please ensure all surfaces are clean and dust free. For protecting and sealing the perimeter, a twin tape system is required. Ensure vapour barrier continuity by applying Visqueen Double Sided tape 50 mm from the edge of wall, overlap the Visqueen Vapour Check membrane and press firmly down onto the tape using a hard rubber seam roller. To complete the seal, use Visqueen Single Sided Vapour Tape applied equidistant over the junction.



### Penetrations

Apply Visqueen Single Sided Vapour Tape half to the pipe and half to vapour control layer. Apply the tape in small length cuts as shown in diagram below.




---

**Storage and Handling**

VisqueenPro Vapour Tapes are classified as non-hazardous when used in accordance with the relevant British Standards. The product should be stored in a warm, dry environment - above 5°C.

---

**Availability**

Visqueen Vapour Control range tapes are available throughout the UK at Visqueen stockist centres. Find your nearest centre by [clicking here](#)

Please note Visqueen Double Sided Vapour Tape is sold in boxes containing 5 rolls. All other tapes are sold singularly.



**Product & Performance Data:**

Description	Value
Visqueen Single Sided Vapour Tape	50mmx15m
Visqueen Double Sided Vapour Tape	20mmx50m*
* sold 5 per box	
Application temperature range	-40oC to 40oC
Peel adhesion testing	N/25mm
Steel	53.6
PE	50.4
Wood	51.2
	N/318mm2
Shear test	15.5



Visqueen Building Products  
 Heanor Gate  
 Heanor  
 Derbyshire  
 DE75 7RG  
 Phone: 0123456789  
 Fax: 0123456789  
 Email: Enquires@visqueen.com  
 For our full range of products, visit [www.visqueen.com](http://www.visqueen.com)

