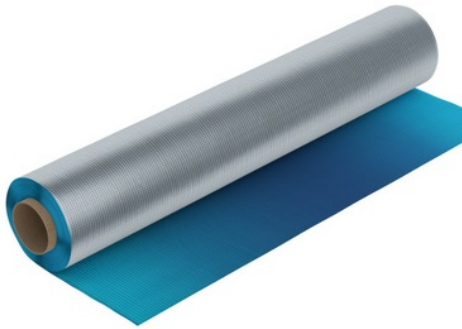


High Performance Vapour Barrier

CE Mark to EN 13984

Page 1



nbsPlus

- Range suitable for all internal building conditions
- Used within roof, wall and floor constructions
- Reduces the likelihood of interstitial condensation
- Vapour resistance of >1100 MNs/g

Description

Visqueen High Performance Vapour Barrier is used to omit the risk of interstitial condensation within a structure as well as improving the general airtightness of the building. Visqueen High Performance Vapour Barrier restricts the passage of warm, moist air from within the building from permeating into the structure or the roof. It is commonly used within timber frame housing as well as commercial buildings.

Visqueen High Performance Vapour Barrier is a tough multi layer reinforced HDPE membrane with an aluminium foil.

Application

The control of condensation to within safe limits is an important consideration in the design and construction of buildings. The occupants of a building and their associated activities produce water vapour which, if unmanaged, can condense within or between building elements; a process referred to as interstitial condensation. This condensation can have serious detrimental effects upon the fabric of the building such as causing the decay of timber elements and corrosion of metal components, and reducing the thermal effectiveness of insulating materials.

With the progressive increases in thermal efficiencies of buildings in order to reduce energy usage, any reduction in the effectiveness of the installed insulation can have long term financial implications. The negative effect upon the fabric of the building increases the incidence of moulds and mildews, which in turn can have a harmful effect upon the health of the building occupants.

Visqueen HP Vapour Barrier provides a means of protecting the warm side of the thermal insulation incorporated in a building by creating a barrier to the movement of warm, moist air.

Visqueen HP Vapour Barrier is a loose laid membrane designed for use in roofs, walls and floors subjected to humidity levels more than 60% at 20 degrees Celsius (BS5250: 2002 class 4 and 5 conditions) e.g. domestic dwellings with high occupancy, sports halls, swimming pools, communal shower areas, laundries, canteens and buildings with wet industrial processes.

System Components

To ensure airtightness the following high performance components complete the Visqueen's vapour control system. [Please click here for datasheet and installation instructions](#)

- Visqueen Pro Double Sided Vapour Jointing Tape
- Visqueen Pro Single Sided Jointing Vapour Tape
- Visqueen Pro Vapour Edge (Flashing) Tape

Installation Fixing

Visqueen Vapour Control Layers should be installed in accordance with the recommendations of BS5250: 2002 'Code of practice for control of condensation

VISQUEEN



High Performance Vapour Barrier

CE Mark to EN 13984

Page 2

in buildings'. Visqueen HP Vapour Barrier should be installed on the "warm" side of the insulated structure, with special care being taken to ensure that all seams and holes are sealed effectively - thus rendering the whole structure moisture and vapour proof and improving thermal performance. It is important that Visqueen HP Vapour barrier should be continuous in order to prevent vapour entering the wall or the roof.

The High Performance Vapour Barrier membrane should be installed with the foil (silver) side facing the warm inside of the building.

Jointing Tapes

To review our high performance tapes and installation instructions please [click here](#).

Ensure all surfaces are clean, smooth and dry prior to the application of Visqueen Pro Vapour Tapes. Surfaces do not require priming prior to tape application.

Before fixing the VCL membrane to a timber frame, all studs including vertical/horizontal studs, head and sole plate; Visqueen Pro Double Sided Jointing tape must be applied.

For total protection, all joints in the HP vapour barrier should be lapped by a minimum of 75mm, and sealed with Visqueen Vapour Tape applied equidistant over the lap. To aid formation, laps should be made over a solid substrate. For protecting and sealing the perimeter, Visqueen Vapour Edge Tape should be used. Where perimeter detailing involves sealing to masonry units such as brickwork, blockwork, etc ensure vapour proof continuity by sealing with Visqueen Vapour Edge Tape applied equidistant over the junction. Visqueen Vapour tapes are coated with a special cold weather acrylic pressure sensitive adhesive system which combines superior quick stick at normal temperatures with superior low temperature performance below freezing. The tapes are highly puncture and tear resistant. Failure to suitably connect the vapour control layer to other building elements will seriously reduce performance.

Additional System Components Visqueen Preformed Top Hat unit –preformed unit for sealing around service pipe penetrations.

Precautions Visqueen Vapour Control Layers are classified as non-hazardous when used in accordance with BS5250: 2002. Care should be taken to avoid accidental damage when handling the membranes on site. Membrane installation is not recommended below 5oC. Visqueen Vapour Control Layers are not intended for use where they will be exposed for long periods of outdoor weathering. When the Vapour Barrier is to be installed near a light fitting please consult with Building Control or the Architect on the suitability of the product. Material softening point is declared in our technical data.

Technical Data and CE Mark

Visqueen Vapour Check complies with the requirements and clauses of EN 13984 - Flexible sheets for waterproofing - Plastic and rubber vapour control layers - Definitions and characteristics.



High Performance Vapour Barrier

CE Mark to EN 13984

Product Data

Product Data

| Characteristic | Test method | Units | Compliance criteria | Value or Statement |
|--|---------------------|---------------------|---------------------|---------------------------------|
| Visible defects | EN 1850 -2 | - | Pass/Fail | Pass |
| Length | EN 1848-2 | m | -0%/+10% | 25 or 50 |
| Width | EN 1848-2 | m | -2.5%/+2.5% | 2 |
| Thickness | EN 1849-2 | mm | -12.5%/+12.5% | 0.52 |
| Mass | EN 1849-2 | g/m ² | -12.5%/+12.5% | 345 |
| Tensile Strength - MD | EN EN12311 | N | >MLV | 515 |
| Tensile Strength - CD | EN EN12311 | N | >MLV | 550 |
| Tensile Elongation - MD | EN EN12311 | % | >MLV | 17 |
| Tensile Elongation - CD | EN EN12311 | % | >MLV | 15 |
| Joint Strength | EN12317-2 | N | >MLV | 332 |
| Watertightness 2kPa | EN 1928 | - | Pass/Fail | Pass |
| Resistance to impact | EN 12691 | mm | >MLV | 200 |
| Low temperature flexibility | EN 495-5 | oC | -40 | Pass |
| Durability (artificial ageing) | EN 1296 and EN 1928 | - | Pass/Fail | Pass |
| Durability Chemical Resistance | EN 1847 | - | Pass/Fail | Pass |
| Resistance to tearing (nail shank) CD | EN 12310-1 | N | MDV | 358 |
| Resistance to tearing (nail shank) MD | EN 12310-1 | N | MDV | 368 |
| Resistance to static loading | EN 12730 | Kg | >MLV | Pass 20 |
| Water vapour transmission - resistance | EN 1931 | MNs/g | MDV | 7000 4.26 x 10 ⁻⁵ |
| Water vapour transmission - permeability | EN 1931 | g/m ² /d | MDV | 0.03 |
| Reaction to Fire | EN 13501-1 | Class | MDV | F |



High Performance Vapour Barrier

CE Mark to EN 13984

Appendix A

About Visqueen

Visqueen is the market leader in the manufacture and supply of structural waterproofing and gas protection systems. Visqueen offers the complete package – a proven, reliable range backed by a technical support service that goes unmatched in the market - everything you would expect from a reputable and ethical company.

Complete Range, Complete Solution

- Structural Waterproofing
- Damp Proof Course
- Damp Proof Membranes
- Gas Protection and Gas Venting
- Vapour Control Layers
- Stormwater Protection

Download Library

- Technical Datasheet
- Standard Details
- Technical Service
- Visqueen Gas Protection Brochure
- NBS Clauses
- BBA Certificates
- Material Safety Datasheets
- Specification Guide

Find your local stockist

Search our directory of Visqueen specification [Specialist Centres](#) to locate your nearest Visqueen Partner.

Technical support throughout your project

We are specialists in our field and can help you specify the correct solutions with the necessary performance levels, in accordance with building regulations.

- Nationwide site support team
- Specification advice
- Installation guidance & project sign off
- System design including CAD details

CPD Seminars and Training Academy



Gas Protection CPD

The specification, technical design, and installation of gas protection systems, enabling the sustainable regeneration of brownfield sites.



Structural Waterproofing CPD

The specification, technical design, and installation of structural waterproofing systems for protection against water and damp ingress in both above and below ground projects.



Visqueen Training Academy

We are now able to offer exclusive in depth training opportunities on a wide variety of Visqueen products at our Training Academy.



Visqueen Special Projects

We provide high-level expertise, comprehensive support and experience in all types of waterproofing and gas protection.

VISQUEEN

Part of RPC bpi group

Heanor Gate Road, Heanor, Derbyshire, DE75 7RG

0333 202 6800 enquiries@visqueen.com www.visqueen.com

The information given in this datasheet is based on data and knowledge correct at the time of printing. Statements made are of a general nature and are not intended to apply to any use or application outside any referred to in the datasheet. As conditions of usage and installation are beyond our control we do not warrant performance obtained but strongly recommend that our installation guidelines and the relevant British Standard Codes of Practice are adhered to. Please contact us if you are in any doubt as to the suitability of application.

