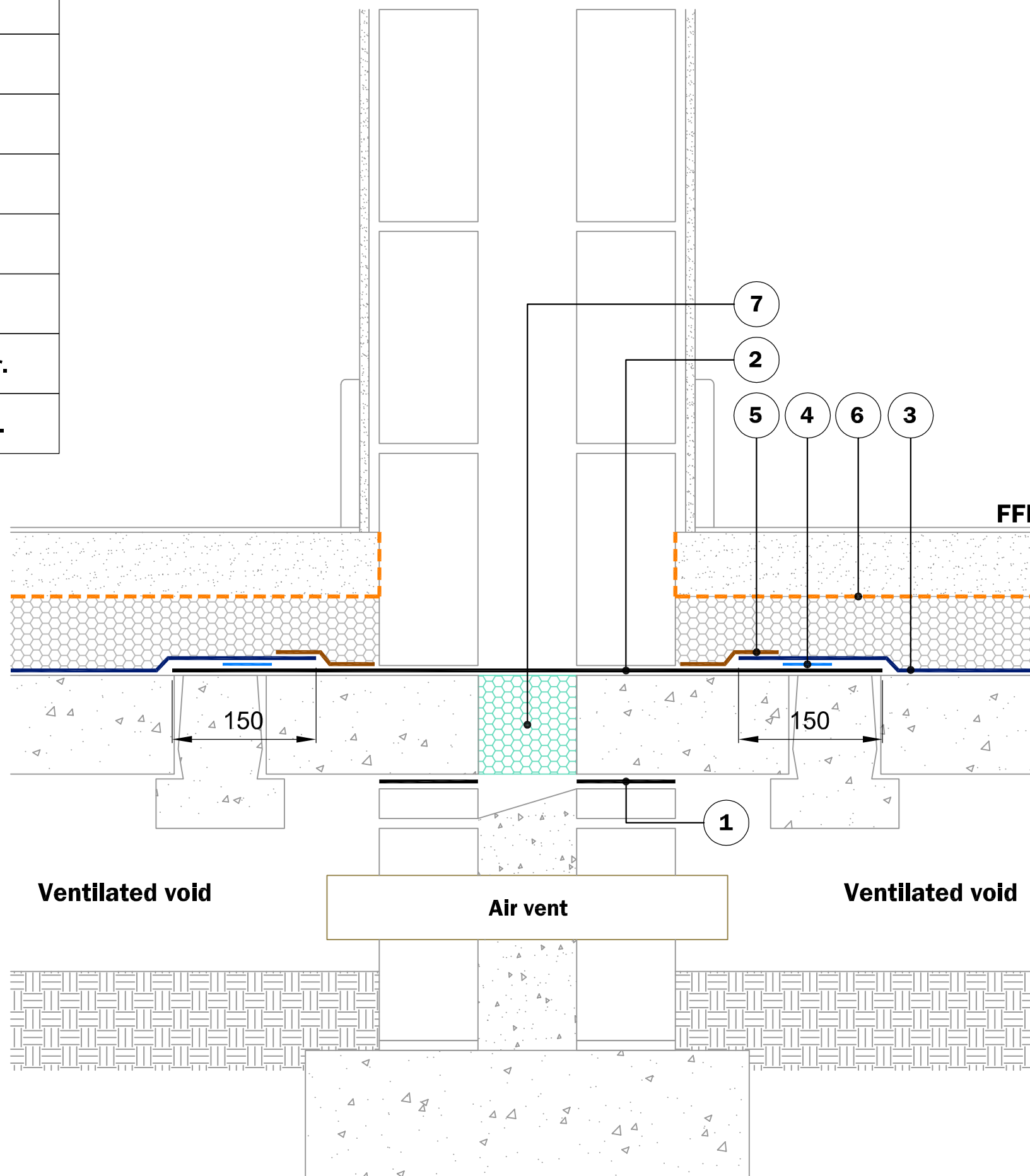


**KEY TO MATERIALS :-**

|   |  |
|---|--|
| 1 | Visqueen Zedex CPT DPC.                        |
| 2 | Visqueen Zedex CPT DPC.                        |
| 3 | Visqueen Low Permeability Gas Membrane.        |
| 4 | Visqueen Double Sided Tape (10m x 50mm).       |
| 5 | Visqueen Gas Resistant Foil Tape.              |
| 6 | Visqueen Vapour Barrier or HP Vapour Barrier.  |
| 7 | Rigid insulation by others to support gas DPC. |

**Important Note :-**

All cavity work above DPC must be kept clear from any mortar droppings by use of a cavity drip batten, full-fill insulation or regular careful cleaning of cavities, avoiding damage to the DPC



© Copyright reserved. This drawing may not be reproduced or amended without prior written permission.

Detail issued for Guidance Only. Designer's Approval Required.

Site construction sequencing should be assessed before the appropriate Visqueen Standard Detail is selected & approved by the Designer.

In order to develop a robust design for protecting a structure against groundwater, a Risk Assessment must be carried out in line with the guidance given in BS8102:2009.

The Designer may need to specify one or a combination of waterproofing measures.

All Visqueen materials must be installed in strict accordance with the manufacturer's instructions. Refer to the current Visqueen datasheets.

Do Not Scale - Use Figured Dimensions Only.

**Standard Detail**



[www.visqueen.com](http://www.visqueen.com)

Scale : NTS

Date : Dec.2018

Drawing No : LPGM-09



**LOW PERMEABILITY  
GAS MEMBRANE**

**Typical Internal Cavity Wall Detail.**

**VISQUEEN**  
0333 202 6800  
[www.visqueen.com](http://www.visqueen.com)  
[enquiries@visqueen.com](mailto:enquiries@visqueen.com)