

**KEY TO MATERIALS :-**

1	Visqueen V20 Cavity Drain Membrane on Visqueen Anti Lime Coating.
2	Visqueen V8 Wall Membrane on Visqueen Anti Lime Coating.
3	Visqueen CD 150mm Corner Strips.
4	Visqueen Water Channel draining to concrete or polyethylene sump.
5	Visqueen Protect&Drain.
6	GypLyner osa wall lining system by others.

7	Visqueen VX25 Waterstop.
8	Rodding Eyes @ 10m crs.
9	Discharge pipe.
10	Waterproof concrete.

**WATCH POINTS :-**  
 1. Ensure V20 Cavity Drain Membrane "cups" are filled as necessary to transmit floor loading.  
 2. Use mortar infill at the edge of the V20 Cavity Drain Membrane to provide a flush surface for bonding the CD 150mm Corner Strip.

© Copyright reserved. This drawing may not be reproduced or amended without prior written permission.

Detail issued for Guidance Only. Designer's Approval Required.

Site construction sequencing should be assessed before the appropriate Visqueen Standard Detail is selected & approved by the Designer.

In order to develop a robust design for protecting a structure against groundwater, a Risk Assessment must be carried out in line with the guidance given in BS8102:2009.

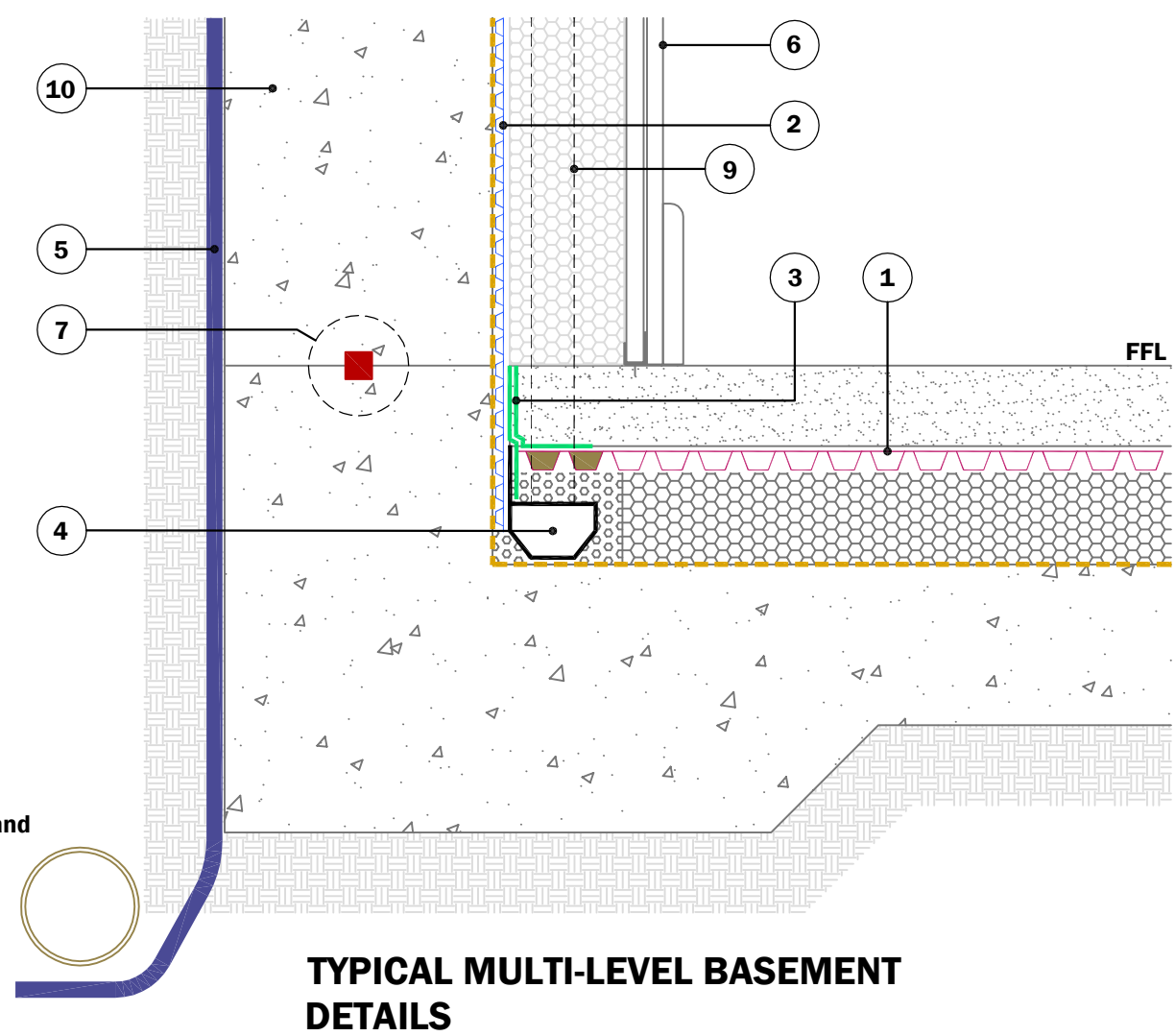
The Designer may need to specify one or a combination of waterproofing measures.

All Visqueen materials must be installed in strict accordance with the manufacturer's instructions. Refer to the current Visqueen datasheets.

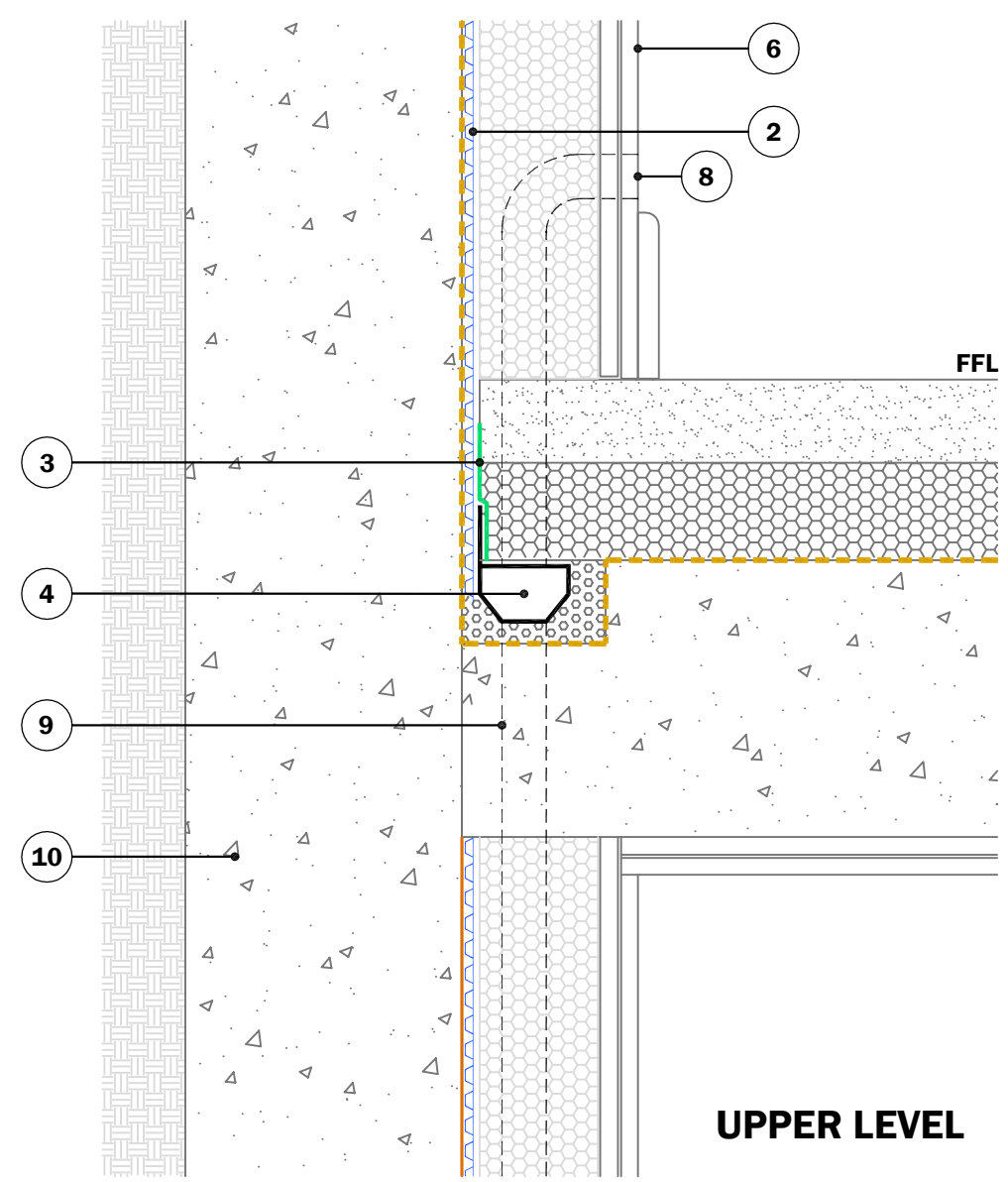
Do Not Scale - Use Figured Dimensions Only.

**Visqueen Cavity Drain Membrane System :-**

1. All cut-outs in concrete slabs to Structural Engineer's design.
2. Visqueen Water Channel to be surrounded in 20mm rounded washed stone.



**TYPICAL MULTI-LEVEL BASEMENT DETAILS**



**UPPER LEVEL**

**Standard Detail**



[www.visqueen.com](http://www.visqueen.com)

Scale : NTS

Date : May.2020

Drawing No : NB-CD-10



**CAVITY DRAIN MEMBRANE SYSTEM**

**Visqueen Cavity Drain Membrane System - New Build.**

**VISQUEEN**  
 0333 202 6800  
[www.visqueen.com](http://www.visqueen.com)  
[enquiries@visqueen.com](mailto:enquiries@visqueen.com)