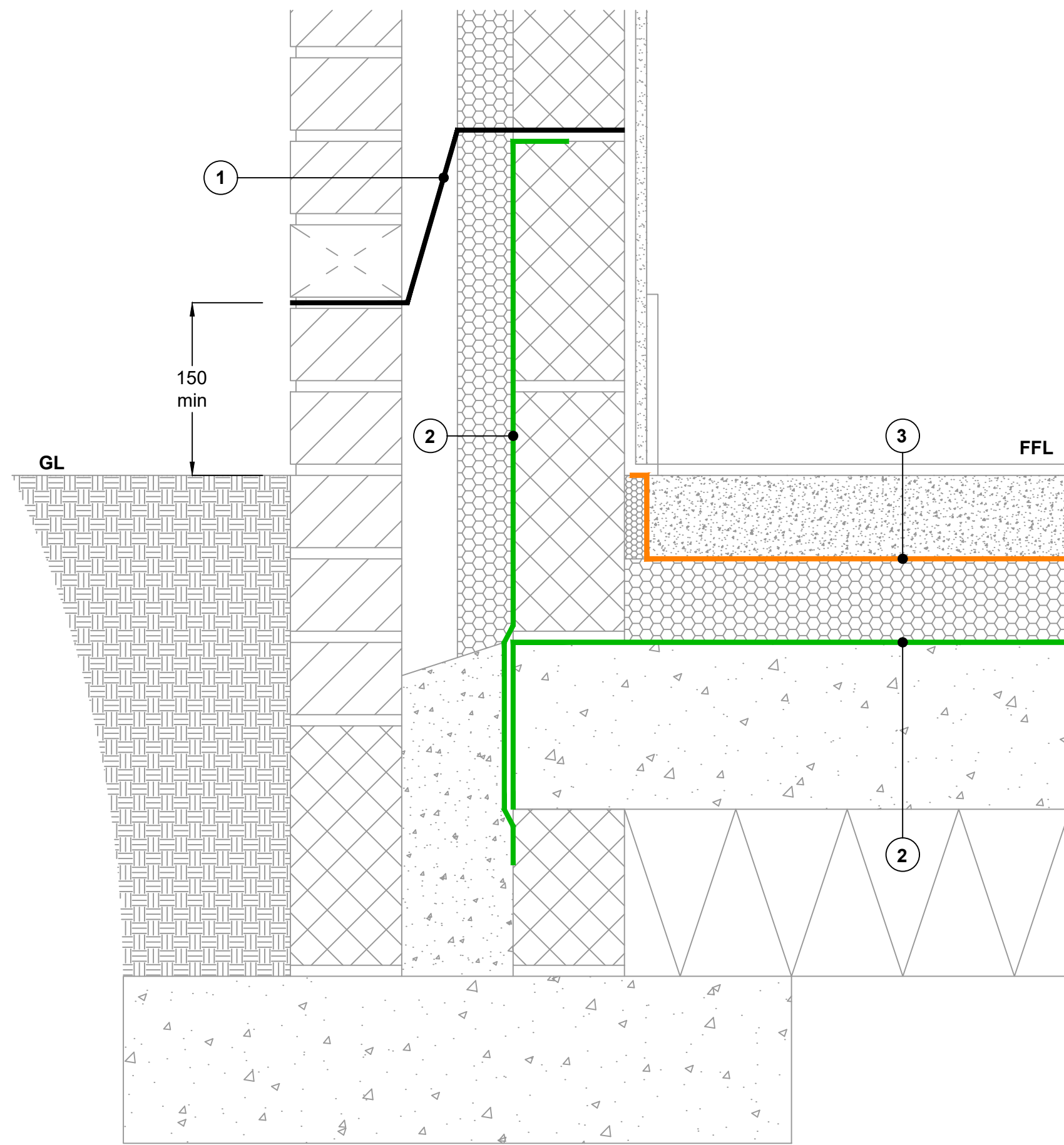


**Key to materials:**

<b>1</b>	<b>Visqueen Zedex CPT High Performance Damp Proof Course</b>
<b>2</b>	<b>Visqueen Self Adhesive Membrane on Visqueen HP Tanking Primer on flush pointed masonry</b>
<b>3</b>	<b>Visqueen Vapour Check or Visqueen Vapour Barrier</b>



**Section View**

Visqueen Standard Details provide generic guidance only and designer's approval is required. These should not be used as construction drawings. It is the designer's responsibility to develop final details suitable for individual buildings.

Site construction sequencing should be assessed before the appropriate Visqueen Standard Detail is selected and approved by the designer.

All Visqueen materials must be installed in strict accordance with the Visqueen product datasheets and applicable 3rd party certificates.

DPCs and DPC cavity trays to be installed in accordance with BS 8215:1991, PD 6697:2019 and BS 8000-3:2020.

Visqueen air and vapour control layers (AVCLs) should be installed in accordance with the recommendations of BS 5250:2021 Management of moisture in buildings - code of practice.

In order to develop a robust design for protecting a structure against groundwater, a risk assessment must be carried out in line with the guidance given in BS 8102:2022.

The designer may need to specify one or a combination of waterproofing measures.

Drawing not to scale, use figured dimensions only. All figured dimensions are in millimetres.

**Standard Detail**



[www.visqueen.com](http://www.visqueen.com)

**Date:** Jun 2023

**Drawing No:** SAM-01

**Revision:**      **Drawn by:** JR

**Tel:** 0333 202 6800  
**enquiries@visqueen.com**

© Copyright reserved. This drawing may not be reproduced or amended without prior written permission.



**MEMBRANE ABOVE SLAB  
CAST IN SITU RC SUSPENDED SLAB &  
EXTERNAL MASONRY CAVITY WALL**