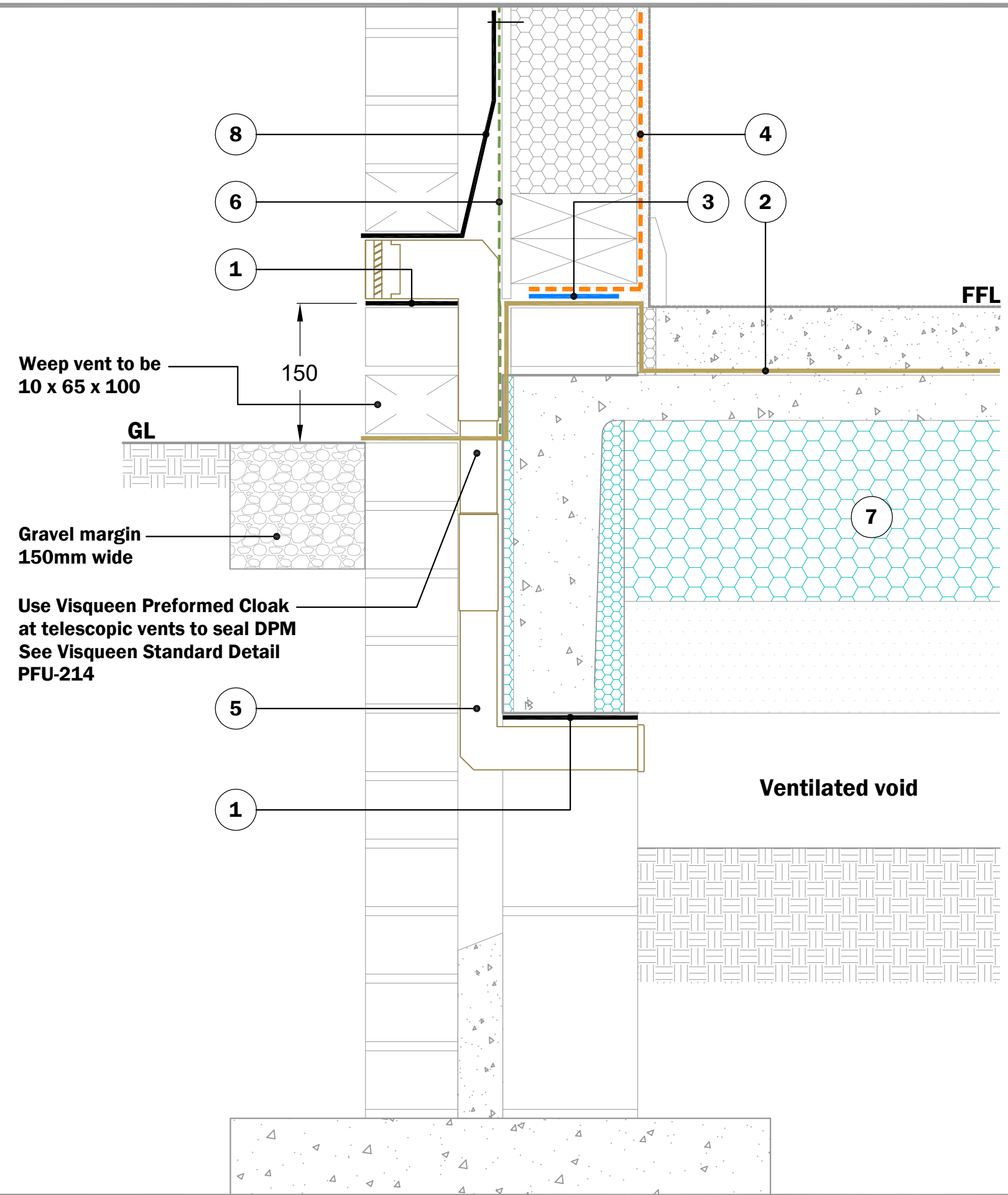


KEY TO MATERIALS :-

1	Visqueen Zedex CPT DPC.
2	Visqueen Ultimate HC BLOK (supported across cavity on rigid insulation by others).
3	Visqueen Ultimate Double Sided Tape.
4	Visqueen Vapour Barrier or HP Vapour Barrier.
5	Visqueen Adjustable Z Vent & Air Brick.
6	Breather membrane by others.
7	Spantherm insulated precast concrete floor system by others.
8	Visqueen Zedex CPT DPC cavity tray with stop ends positioned locally over telescopic vents & stapled to timber frame.



Weep vent to be 10 x 65 x 100

150

GL

Gravel margin 150mm wide

Use Visqueen Preformed Cloak at telescopic vents to seal DPM See Visqueen Standard Detail PFU-214

FFL

Ventilated void

© Copyright reserved. This drawing may not be reproduced or amended without prior written permission.

Detail issued for Guidance Only. Designer's Approval Required.

Site construction sequencing should be assessed before the appropriate Visqueen Standard Detail is selected & approved by the Designer.

In order to develop a robust design for protecting a structure against groundwater, a Risk Assessment must be carried out in line with the guidance given in BS8102:2009.

The Designer may need to specify one or a combination of waterproofing measures.

All Visqueen materials must be installed in strict accordance with the manufacturer's instructions. Refer to the current Visqueen datasheets.

Do Not Scale - Use Figured Dimensions Only.

Standard Detail



www.visqueen.com

Scale : NTS

Date : Sept.2019

Drg No : SPAN-HC-IRL-02



Spantherm Typical Edge Detail - Timber Frame

VISQUEEN
0333 202 6800
www.visqueen.com
enquiries@visqueen.com