

KEY TO MATERIALS :-	
1	Visqueen TorchOn Tanking (2 layers) on Visqueen HP Tanking Primer.
2	Visqueen Zedex CPT DPC cavity tray.
3	Visqueen Protect&Drain 12mm.
4	Visqueen Vapour Barrier or HP Vapour Barrier.
5	Visqueen IGW Waterstop bedded in Visqueen Waterstop Adhesive.
6	Visqueen IGW watertight concrete.

7 Moisture resistant rigid insulation by others.

© Copyright reserved. This drawing may not be reproduced or amended without prior written permission.

Detail issued for Guidance Only. Designer's Approval Required.

Site construction sequencing should be assessed before the appropriate Visqueen Standard Detail is selected & approved by the Designer.

In order to develop a robust design for protecting a structure against groundwater, a Risk Assessment must be carried out in line with the guidance given in BS 8102:2022

The Designer may need to specify one or a combination of waterproofing measures.

DPCs and DPC cavity trays to be installed in accordance with BS8215:1991 and PD6697:2019.

All Visqueen materials must be installed in strict accordance with the manufacturer's instructions. Refer to the current Visqueen datasheets.

Do Not Scale, Use Figured Dimensions only. All figured dimensions are in mm.

(Revision: Berry UK Design Centre)

Standard Detail



www.visqueen.com

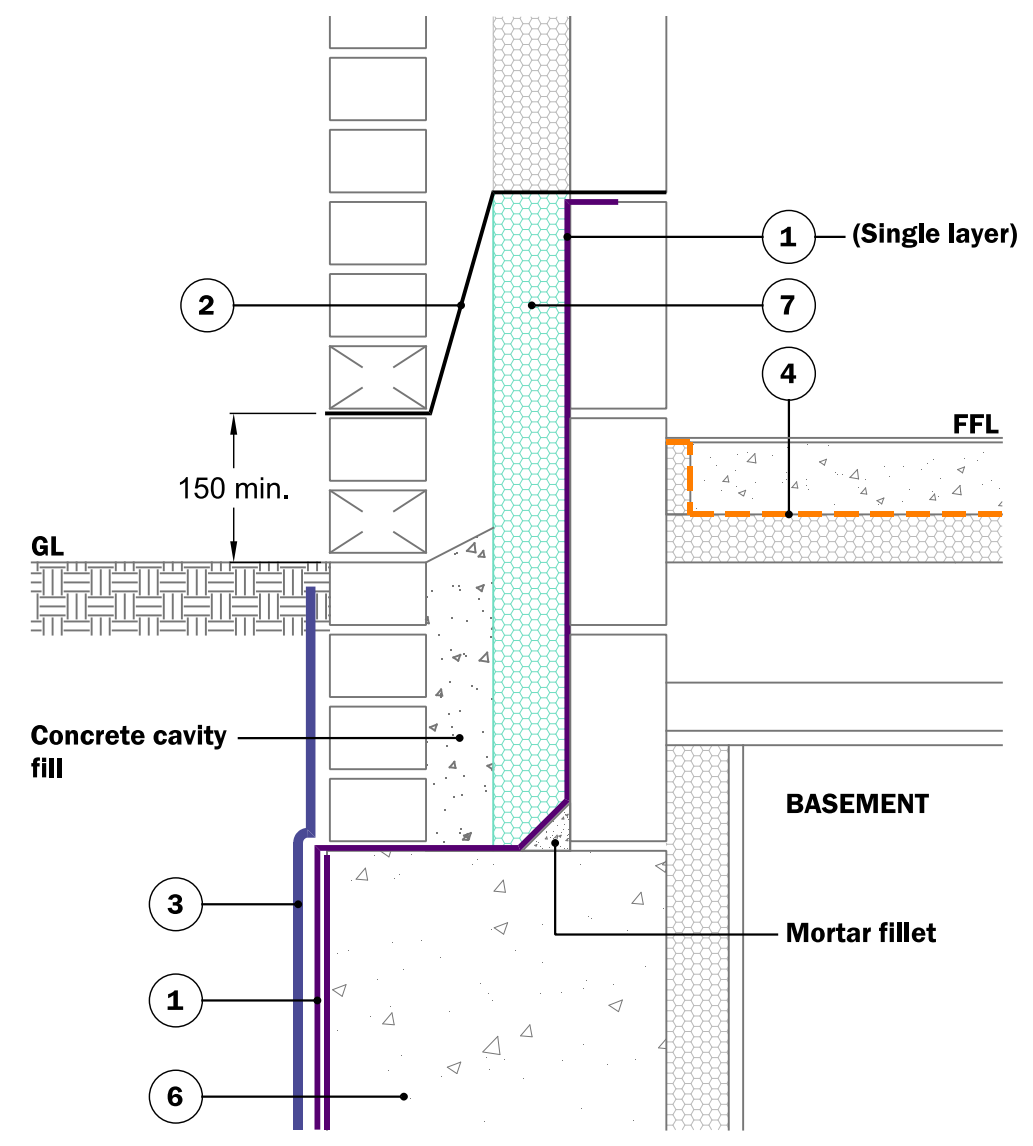
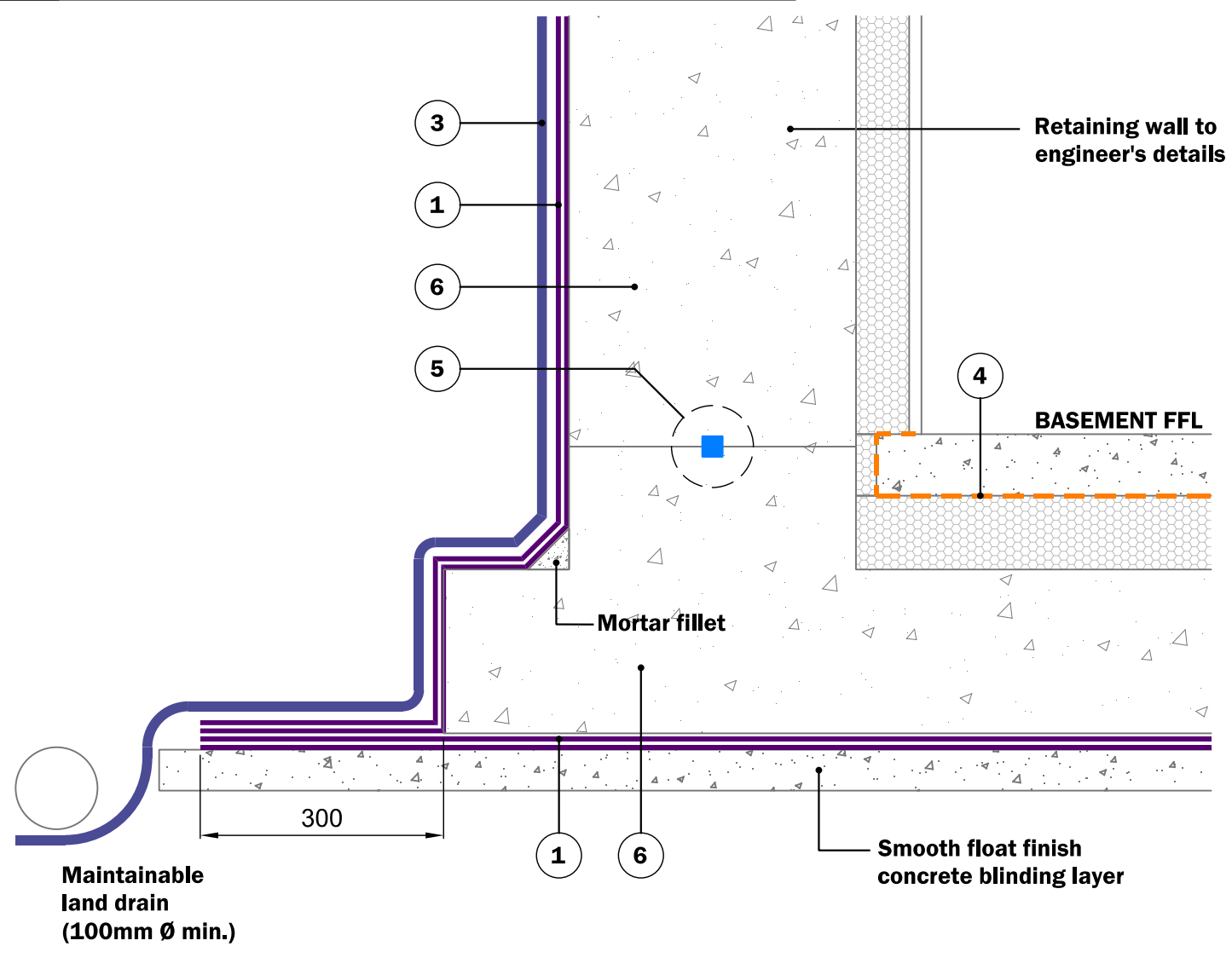
Scale : NTS

Date : June 2022

Drawing No : T-12

Revision Status : 1

VISQUEEN
 0333 202 6800
 www.visqueen.com
 enquiries@visqueen.com



Typical RC Retaining Wall Detail. Type A (External) and Type B protection.